

# Jewry Wall Museum

## Development Update August 2022



# Project Summary

- Major building refurbishment
- New walkway access from St Nicholas Circle
- Multi-media interpretation and unique Roman objects in the exhibition
- New shop, café, meeting and learning rooms



# Development Programme

- 3 Phases:
  - Phase 1 - External building works & strip out
  - Phase 2 - Internal fit out
  - Phase 3 - Exhibition and museum fit out





# Phase 1 Progress

- Internal strip out complete
- Preparation for install of new lift and stairs and external walkway
- Delays due to contractor going into administration
- Works restarted on roof and tender process for contractor to complete Phase 1 works in progress



# Phase 1 Progress



# Phase 1 Progress





## Phase 2 (Internal Fit Out) Progress

- Procurement exercise undertaken
- Contract about to be signed with successful supplier
- Timetable to be finalised following on from completion of Phase 1 procurement exercise.

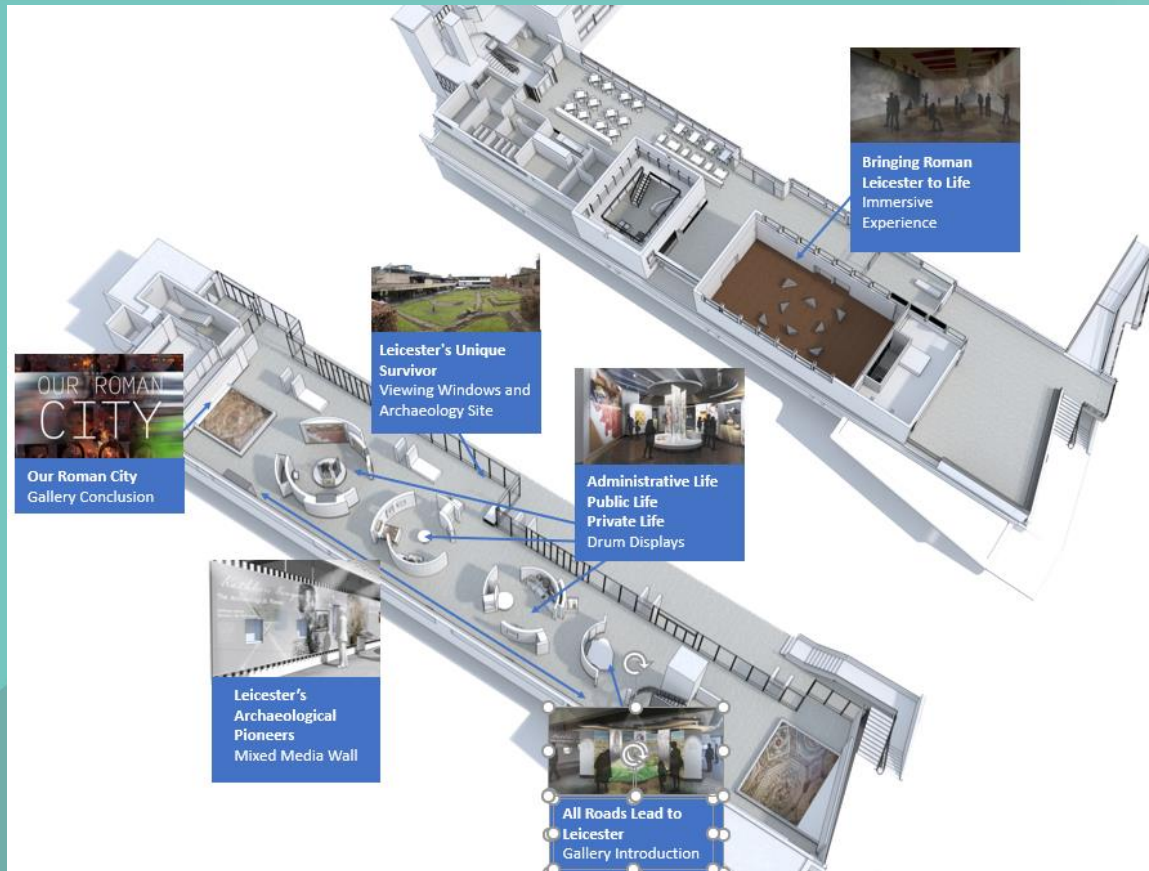
## Phase 3 (Exhibition Fit Out) Progress

- Haley Sharpe Design – exhibition design
- Elmwood Projects – exhibition fitout
- AV contract procurement exercise in progress





# Phase 3 Overview

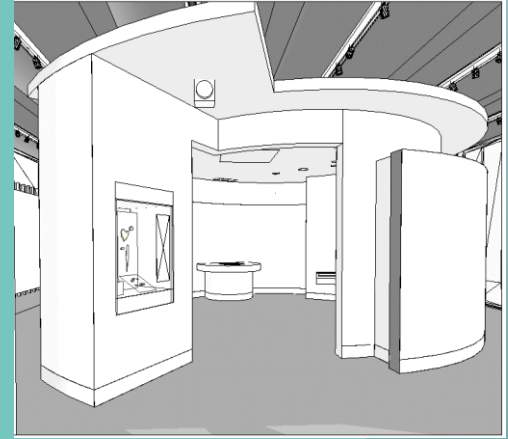
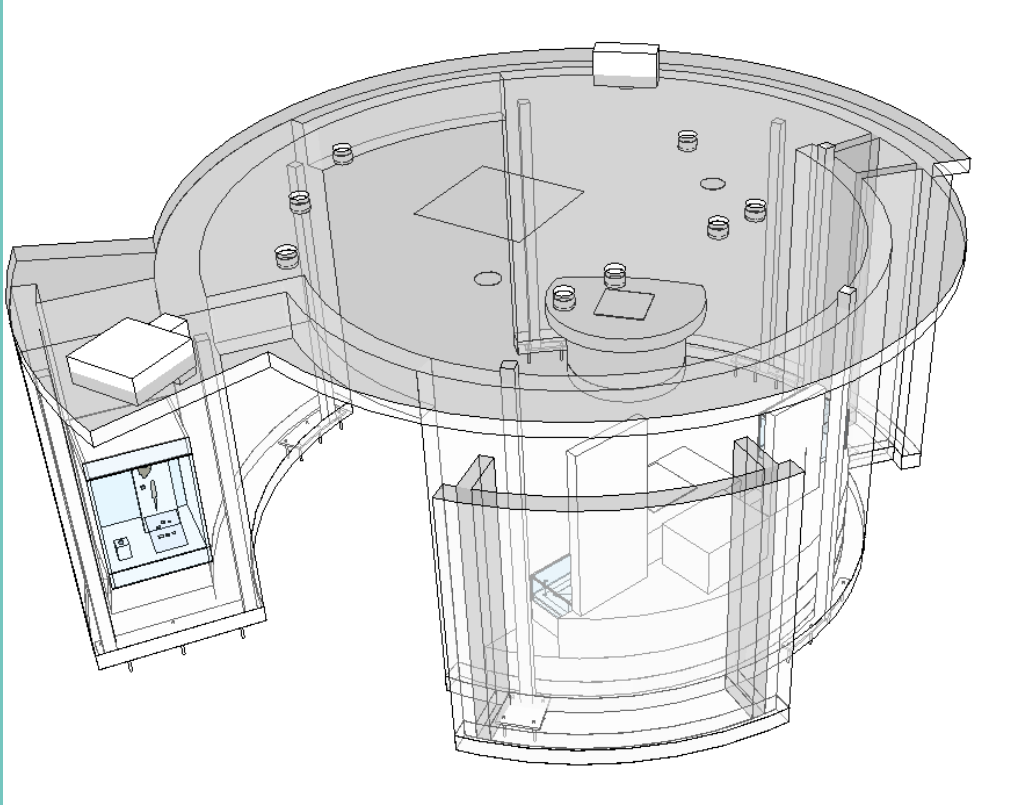


# Phase 3 (Exhibition Fit Out) Progress

- Exhibition construction in progress



## Phase 3 Drum Design





## Phase 3 Graphics



## Phase 3 Graphics



# Our Roman City

- Four community engagement projects
- Leicester residents discovering more about the Roman city and its legacy
- Footage of projects feeds into final exhibition film





# Our Roman City Projects

- *Ancient Objects, New Stories* with University of Leicester, Uplands Juniors, Brooke Mead Academy completed
- Other projects in development with local partners
- Topics might include Roman diversity, food, roads, buildings, language

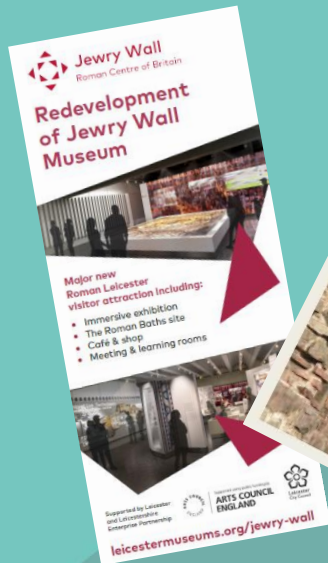


## Phase 3 Activities

- Collections preparation
- Learning/Room hire spaces fit out
- Learning session development
- Marketing – website development
- Retail
- Café
- Offices
- IT

# Friends of Jewry Wall

- Ongoing communications with the Friends
- Awareness raising – Heritage Sundays





# Completion Programme

- Roof works completion – July 22
- Phase 1 shell completion – April 23
- Phase 2 internal building fit out completion – February 24
- Phase 3 exhibition display and museum fit out completion – Summer 24